

iPad Cockpit Mounts

ATA 46 - INFORMATION SYSTEMS

CLASSIFICATION Operations

CRITERIA Operational Recommendations / Improvements
Maintenance Recommendations / Improvements

F10	Falcon 20		F200	Falcon 50		Falcon 900					Falcon 2000						Falcon 7X		6X	
		-5			EX		EX	EASy	DX	LX		EX	EASy	DX	LX	S	LXS	✓	8X	✓

Revision	Date	Description
0	Oct 15, 2020	Original Publication
5	Jan 06, 2025	New comprehensive Service Bulletin with 15W capability added for 8X, F2000LXS and F2000S.

EXECUTIVE SUMMARY

Dassault has developed multiple certifications for iPad mounts in the cockpit, providing a secure, safe and dependable means of attaching the iPad Electronic Flight Bag (EFB) during taxi, take-off, and landing. The installation includes MFi (Made For iDevices) certified electrical charging controlled through an ON/OFF switch. The mounts are environmentally qualified (including flammability) and replaces the existing CMC EFB (CMA-1100/CMA-1310 models) and INGENIO's obsolete 12.5W iPad Cockpit Mounts.

For information on Dassault software for iPad EFBs, please refer to the Falcon Customer Portal:

<https://customer.dassaultfalcon.com/apps/eoperations/FalconSphere/Pages/Introduction.aspx>

Developed by INGENIO in partnership with Dassault, the iPad cockpit mounts won the prestigious Red Dot Design Award 2024. The jury, composed of experts in product design, highlighted the functionality and quality of the mounts in its statement:

"With its functional, ergonomic design, high manufacturing quality and easy handling, this mount is a useful addition to the pilot's workstation."



reddot winner 2024

For more information about the Red Dot Design Award 2024, please refer to the Red Dot Organisation website: <https://www.red-dot.org/project/ingenios-cockpit-tablet-electronic-flight-bag-efb-for-dassault-falcon-aircraft-2000-series-70200>

INFORMATION

The installation of iPad cockpit mounts on Falcon aircraft is approved by most aviation authorities worldwide including FAA, EASA, TCCA, AFAC Mexico and ANAC.

The new 15W USB-C is, or will be, available for the following configurations:

- Falcon 7X:
 - All aircraft with CMC EFB already installed, refer to SB 7X-549 SECTION 1,
 - SN 142 or above, without CMC EFB, refer to SB 7X-549 SECTION 2,
 - All aircraft with 12.5W charger already installed, refer to SB 7X-549 SECTION 3.
- Falcon 8X:
 - All aircraft, refer to SB 7X-638 SECTION 1, 2 or 3 based on aircraft configuration.
- Falcon F2000EX EASy series:
 - All F2000LXS and F2000S with 12.5W charger already installed, refer to SB F2000EX-474 SECTION 1,
 - All F2000LXS and F2000S, refer to SB F2000EX-474 SECTION 2,
 - SB available Q3-2025 for F2000EX EASy, F2000DX and F2000LX, with or without CMC EFB.
- Falcon F900EX EASy series:
 - SB available Q1-2025 for F900LX,
 - SB available Q3-2025 for F900EX EASy.

The former 12.5W USB-C charger remains available for the following configurations until the 15W USB-C charger is available:

- Falcon 2000EX EASy series:
 - F2000EX EASy, F2000DX and F2000LX, with CMC EFB.
- Falcon 900EX EASy series:
 - F900LX SN 263, 271 and above,
 - F900EX EASy, F900DX and F900LX SN 262 and below or 264 to 270, with CMC EFB.

NOTE 1: 12.5W USB-C holders will maintain the charging level of the iPads at the minimum. The 15W USB-C PD holders guarantee the charge of the iPads.

NOTE 2 : iPad holders with lightning connector are no longer procurable.

COMPATIBLE IPAD MODELS (USB-C CONNECTOR)

iPad Description	Applicability	6X 7X / 8X F2000EX EASy series F900EX EASy series	F2000EX EASy series F900EX EASy series
	iPad Model	Tablet holder PN: 209-5044-011 209-5049-011	Tablet holder PN: 209-5044-019
iPad Pro (11")	A1980	Compatible	Compatible
	A1934	Compatible	Compatible
	A2013	Compatible	Compatible
	A1979	Compatible	Compatible
iPad Pro (2 nd gen.) (11")	A2228	Compatible	Compatible
	A2068	Compatible	Compatible
	A2230	Compatible	Compatible
	A2231	Compatible	Compatible
iPad Pro (3 rd gen.) (11")	A2377	Compatible	Compatible
	A2459	Compatible	Compatible
	A2301	Compatible	Compatible
	A2460	Compatible	Compatible
iPad Pro (4 th gen.) (11")	A2759	Compatible	Compatible
	A2435	Compatible	Compatible
	A2761	Compatible	Compatible
	A2762	Compatible	Compatible
iPad Air (4 th gen.) (10.9")	A2316	Compatible	Compatible
	A2324	Compatible	Compatible
	A2325	Compatible	Compatible
	A2072	Compatible	Compatible
iPad Air (5 th gen.) (10.9")	A2588	Compatible	Compatible
	A2589	Compatible	Compatible
	A2591	Compatible	Compatible
iPad Air 11" (M2)	A2902	Compatible	Compatible
	A2903	Compatible	Compatible
	A2904	Compatible	Compatible
iPad Mini (6 th gen.) (8.3")	A2567	Compatible*	Compatible*
	A2568	Compatible*	Compatible*
	A2569	Compatible*	Compatible*

*Access to the volume buttons is restricted; volume may be adjusted in the iPad settings or by removing it from the holder.

INCOMPATIBLE IPAD MODELS (ANY TABLET HOLDER)

iPad Description	iPad Model	Applicability
		6X 7X / 8X F2000EX EASy series F900EX EASy series
iPad	A1219	iPads have 30-pin connector
	A1337	
iPad 2	A1395	
	A1396	
	A1397	
iPad (3 rd gen.)	A1416	
	A1403	
	A1430	
iPad (4 th gen.)	A1458	iPads dimensions incompatible with holder
	A1459	
	A1460	
iPad Pro (12.9")	A1584	iPads size too large
	A1652	
iPad Pro (2 nd gen.) (12.9")	A1670	
	A1671	
	A1821	
iPad Pro (3 rd gen.) (12.9")	A1876	
	A1895	
	A2014	
	A1983	
iPad Pro (4 th gen.) (12.9")	A2229	
	A2069	
	A2232	
	A2233	
iPad Pro (5 th gen.) (12.9")	A2378	
	A2379	
	A2461	
	A2462	
iPad Pro (6 th gen.) (12.9")	A2436	
	A2764	
	A2437	
	A2766	
iPad Pro 11" (M4 - 2024)	A2836	
	A2837	
	A3006	
iPad Pro 13"(M4 - 2024)	A2925	
	A2926	
	A3007	
	A2898	

iPad Description	iPad Model	Applicability
		6X 7X / 8X F2000EX EASy series F900EX EASy series
iPad Air 13" (M2)	A2899	
	A2900	
iPad (10 th gen) (10.9")	A2696	
	A2757	
	A2777	

CERTIFICATION PATHS AND PROCUREMENT (15W USB-C)

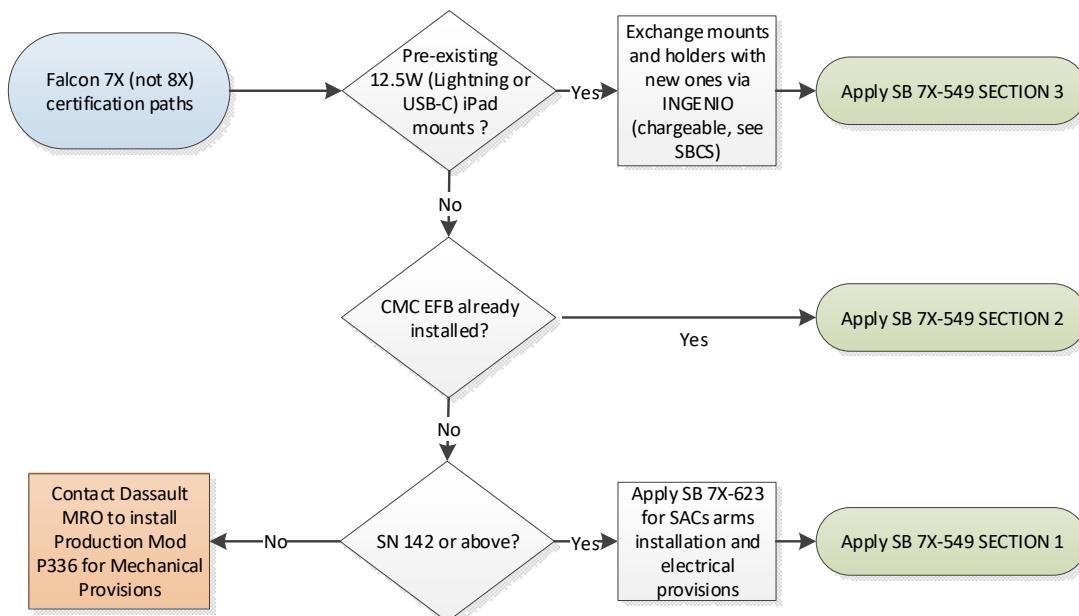


Figure 1: Decision tree for 7X cockpit mounts installation - 15W USB-C

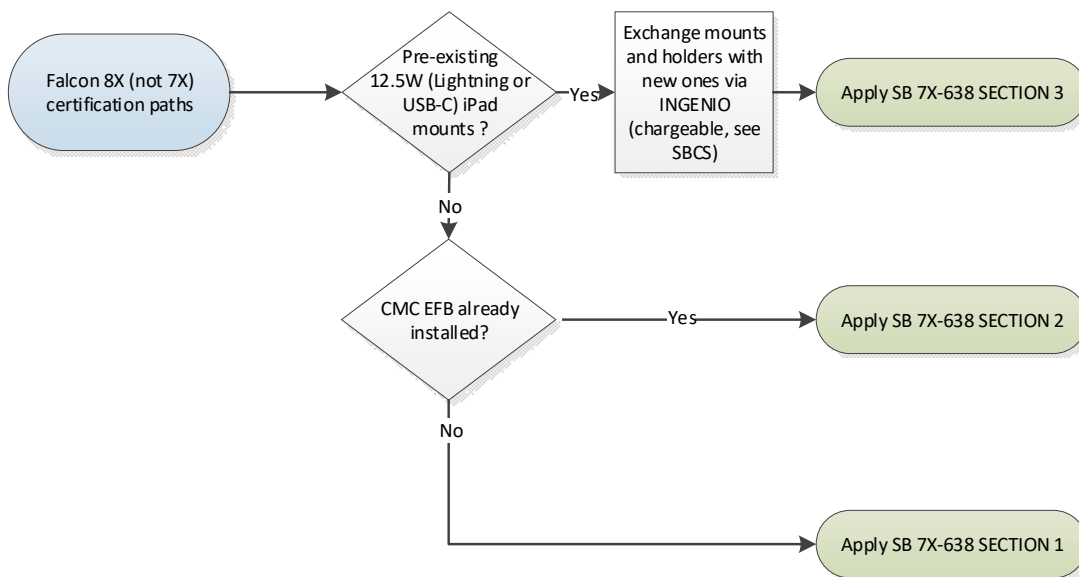


Figure 2: Decision tree for 8X cockpit mounts installation - 15W USB-C

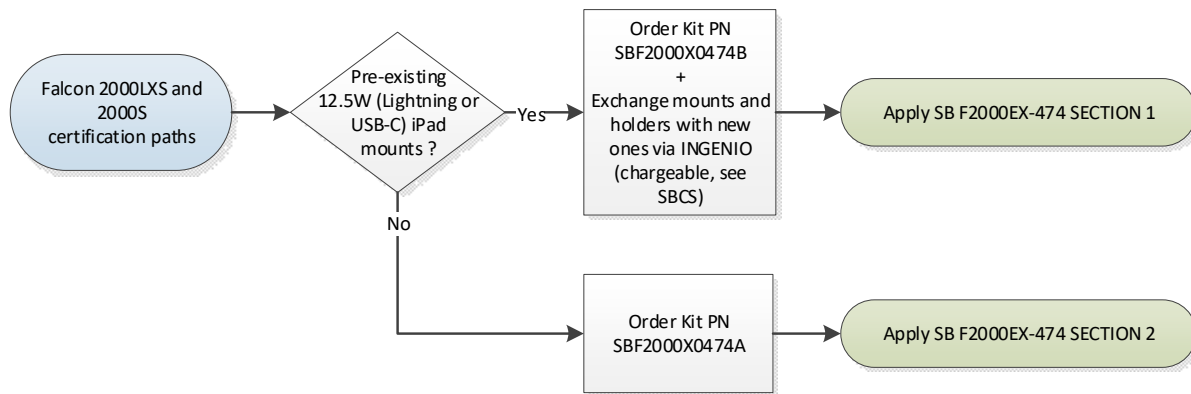
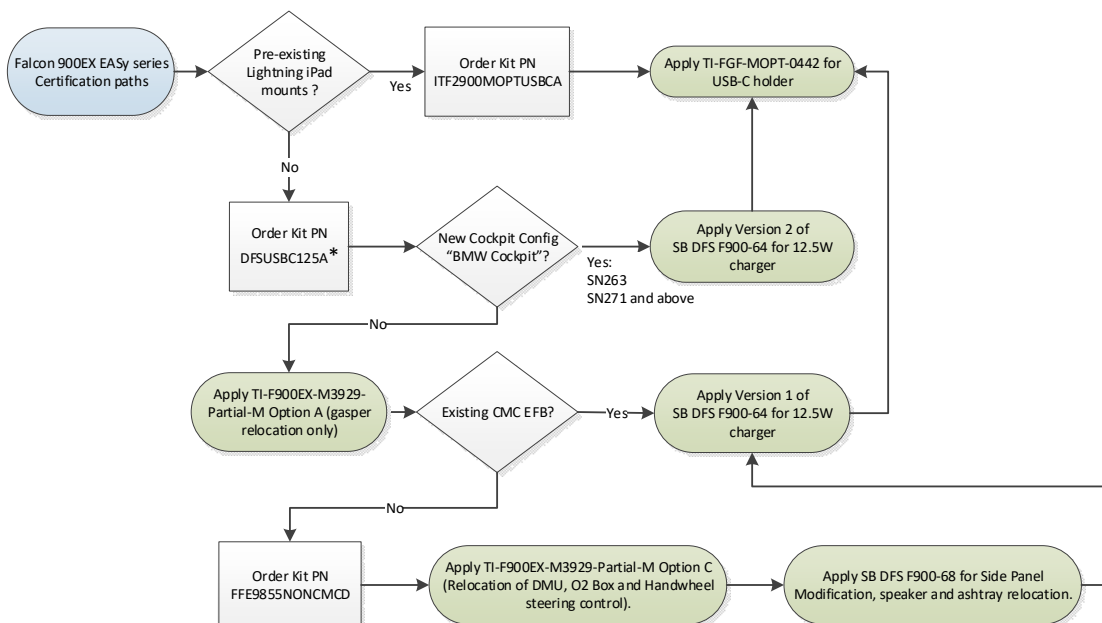


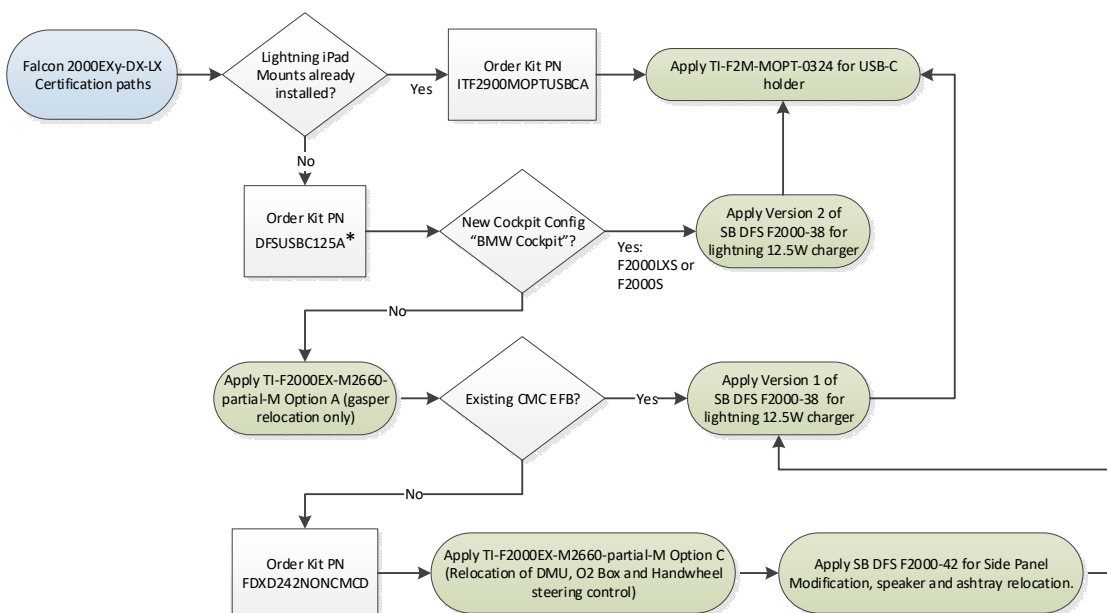
Figure 3: Decision tree for F2000LXS-S cockpit mounts installation - 15W USB-C

CERTIFICATION PATHS AND PROCUREMENT (12.5AW USB-C)



*Order kit components separately if single side installation

Figure 4: Decision tree for F900EX EASy series cockpit mounts installation



*Order kit components separately if single side installation

Figure 5: Decision tree for F2000EX EASy series cockpit mounts installation

PICTURES



Figure 6: deployed Cockpit mounts on 8X with power off switch between co-pilot console and RH cockpit sidewall (not shown)



Figure 7: Deployed Cockpit Mounts on 7X with power off switch (circled in green)



Figure 8: Stowed Cockpit iPad Mounts on 7X



Figure 9: Render showing deployed iPad locations on F900EX EASy series (F2000EX EASy series similar)



Figure 10: Pilot side cockpit mount deployed (left); copilot side cockpit mount stowed with charging switch circled in green (right) - F2000EX EASy and F900EX EASy series



Figure 11: 7X and 8X cockpit mount (without iPad) (left); F2000EX EASy and F900EX EASy series (with transparent iPad to show deploy/stow mechanism) (right)

CAUTION: THE IPAD MUST BE REMOVED BY PULLING IT FOLLOWING THE AXIS OF THE CONNECTOR. PULLING TOWARD THE USER INCREASES THE RISK OF DAMAGING THE CONNECTOR AND VOIDING THE WARRANTY.

DOCUMENTATION

Data Package

The data package provided with the kit contains the Service Bulletin and its detailed installation instructions as well as wiring diagrams, operational and installation manuals for the mounts, flight manual supplement (AFMS) if applicable, supplemental maintenance manuals and supplemental CODDE documentation.

Appendix

Additional information to order these iPad mounts is available in the Service Bulletin and associated Commercial Summary, as well as in the latest Aftermarket Catalogue at the following link:

<https://customer.dassaultfalcon.com/support-services/enhancement/Documents/STC%20In-Service-Aircraft-Upgrades/Catalogue/Catalogue-824-AS-Roster.pdf>

Feedback

Dassault Aviation values your feedback. For feedback, questions, or comments regarding any section of this document, please email:

Aftermarket@DassaultFalconJet.com

FALCON COMMAND CENTER	FALCON SPARES	FALCON OPERATIONAL SUPPORT	FALCON DOCUMENTATION
<p>Teterboro, NJ USA PHONE: +1 201 541 4747 EMAIL: commandcenter@dassaultfalconjet.com</p> <p>Mérignac, France PHONE: +33 5 56 18 47 47 EMAIL: commandcenter@dassault-aviation.com</p>	<p>Teterboro, NJ USA PHONE: +1 201 541 4809 EMAIL: customer.care@dassaultfalconjet.com</p> <p>Mérignac, France PHONE: +33 5 56 18 44 44 EMAIL: dafsorders@dassault-aviation.com</p>	<p>Teterboro, NJ USA & Saint-Cloud, France FALCON PILOT SUPPORT EMAIL: falconpilot@dassault-aviation.com</p> <p>Little Rock, AR USA & Saint-Cloud, France FALCON CABIN SUPPORT EMAIL: falconcabin@dassault-aviation.com</p>	<p>Teterboro, NJ USA PHONE: +1 201 541 4819 EMAIL: wh.doc-sales@dassaultfalconjet.com</p> <p>Mérignac, France PHONE: +33 5 56 14 59 25 EMAIL: documentation-sales&support@dassault-aviation.com</p>