

CES Receptacle - Plug & Play Solutions

The Problem

In the past Rockwell Collins and Bombardier Aerospace released an enhanced Cabin Management System for Bombardier Global 5000/5500/6000/6500 business jet platforms, called the Cabin Electronics System (CES). Aircraft equipped with this CES Cabin Management System allowed for individual plug-in passenger monitors, which deployed from the CES Cabin Receptacle (HTSE receptacles). These specific CES electro-mechanical sockets equipped with video monitors, allowed passengers to watch the IFE options available at that time.

Today, however, these monitors and mechanisms are becoming more and more obsolete in the world of digital sources and distribution on aircraft. Today's passengers bring their own media via their Personal Electronic Devices (PEDs) such as mobile phones, Apple iPads and Android Tablets. Modern cabin management systems can even stream media to these devices via the audio-video system or streaming products such as GoGo Avance, Moment's Flymingo Box, JetPack's Vision IFE and others. In most cases, leaving these monitors inoperative, and quite costly to service and/or replace.

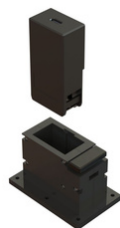
The INGENIO Aerospace Solution

INGENIO Aerospace designed product solutions that address the obsolescence issue of the CES (HTSE) Receptacle. It offers aircraft owners and operators a great alternative of use without having to remove the installed Receptacle, saving engineering cost and no downtime required. Both product solutions breathe new life into aircraft cabins, by transforming "outdated" Collins' CES Receptacles into highly useful tools for passenger productivity and entertainment.

CES Cabin Tablet-Arms INGENIO offers a direct Plug & Play replacement of the video monitors installed in the CES Receptacle, which is the INGENIO CES Cabin Tablet Arm and INGENIO Tablet-Holder. This assembly provides USB Power Delivery (PD) functionality, and allows passengers to use their own devices on board of the aircraft. Simultaneously reducing the need to have multiple devices that serve the same purpose.



INGENIO CES Cabin Tablet-Arms
PN: 209-8316-011 & 209-8356-011



INGENIO CES Drop-In USB PD
Charger PN: 209-8411-011

CES Drop-In USB PD Chargers This loose equipment USB PD Charger is specifically designed to fit directly into the Collins CES Receptacle. By inserting this plug & play USB Charger in the existing Receptacle it will instantly transform the electro-mechanical socket to an optimized USB Power Delivery port, for today's ever growing list of Portable Electronic Devices (PED's). Allowing passengers to 'fast charge' their carry-on devices.

INGENIO Parts Required

The Parts

The INGENIO Plug & Play parts compatible to the Rockwell Collins CES Receptacle:

INGENIO CES Standard Cabin Tablet-Arm (5-inch)	PN 209-8356-0XX
INGENIO CES Premium Cabin Tablet-Arm (10-inch)	PN 209-8316-0XX
INGENIO Tablet-Holder (Type-C connector)	PN 209-8042-0XX
INGENIO CES Drop-In USB PD Charger*	PN 209-8411-011



*The CES Drop-In USB PD Charger is available per unit, or in a bundle of four (4) units

INGENIO CES Drop-In USB PD Charger



Arm

INGENIO
209-8356-011
Standard 5"
Tablet Arm
209-8316-011
Premium 10"
Tablet Arm



Holder

INGENIO
209-8042-011
Tablet Holder
(USB C)



Tablet Cabin Mount

INGENIO Aerospace
CES Receptacle Solution

**Contact INGENIO or an
INGENIO Dealer to find out more:**

sales@ingenioaerospace.com

phone: +1 514 500 0561